

# **USER'S MANUAL OVER UNDER SHOTGUN**

**READ THE INSTRUCTIONS AND WARNINGS IN THIS  
MANUAL CAREFULLY BEFORE USING THIS FIREARM**

**READ THE INSTRUCTIONS AND WARNINGS IN THIS MANUAL CAREFULLY BEFORE USING THIS FIREARM**

**FIREARM SAFETY**

At WIMBERLEY, we believe that safe firearm handling is the most important consideration for anyone who uses firearms and ammunition. Please take a few minutes to read and understand this owner's manual included with this shotgun.

**CAUTION**

**FIREARMS SAFETY DEPENDS ON YOU!**

- Don't rely on your gun's safety. Treat every gun as if it were loaded and ready to fire.
- Never cross a fence, climb a tree or jump a ditch with a loaded gun. Never load or carry a loaded gun until you intend to use it.
- Watch your muzzle so the other fellow doesn't have to.
- Keep guns and ammunition separately and in locked storage.
- Don't shoot unless absolutely sure of your target and what is beyond it.
- Know the range of your gun.
- Always wear eye and ear protection when shooting.
- Always be sure the barrel is free of obstructions, and only carry ammunition specifically intended for the gun you are using.
- Do not alter or modify your gun. Have your gun regularly checked by a gunsmith.

**THIS MANUAL CONTAINS**

**1 Important warnings that should be read and understood before using this firearm. SAFE GUN HANDLING IS YOUR PERSONAL RESPONSIBILITY AT ALL TIMES.** Disregarding warnings in this manual may result in injury or death to you and/or others and damage to property.

**2 Directions and procedures for handling, loading, firing and unloading.**

**3 Instructions for care, cleaning, repair, and service of this shotgun.** This instruction and safety manual is designed to help you learn how to properly use and care for your WIMBERLEY Over Under shotgun. Only when you are certain you have fully familiarized yourself with the function of your firearm should you practice loading, unloading and firing with live rounds of ammunition. This instruction manual should always accompany this firearm and be transferred with it upon change of ownership. Should you ever need to replace it, this manual is available FREE upon request from WIMBERLEY .

**DISCLAIMER OF LIABILITY**

WIMBERLEY is not liable for physical injury due to product malfunction, intentional or accidental discharge of this firearm, criminal or negligent use, improper or careless use, unauthorized modification or alteration, use of defective improper or hand-loaded (modified) ammunition.

**For your safety, use only original high quality commercially manufactured ammunition in good condition that is appropriate to the caliber / gauge of your gun. WIMBERLEY shall not be responsible for products or results from use of defective, improper or reloaded ammunition.**

**WARNING - LEAD EXPOSURE**

**Discharging firearms in poorly ventilated areas, cleaning firearms, or handling ammunition may result in exposure to lead and other substances that may cause birth defects, reproductive harms, and other serious physical injuries. Have adequate ventilation at all times. Wash your hands thoroughly after exposure. Shooting or cleaning guns may expose you to lead.**

**WARNING**

**Prior to removing this gun from its packaging and prior to loading and firing, carefully and thoroughly read the entire instruction manual which gives advice on the firearm's proper handling and function. Your safety and that of others (including your family) depends on your responsible compliance with that advice. If unfamiliar with firearms, seek supervised instruction.**

**FIREARMS SAFETY IS YOUR RESPONSIBILITY. GENERAL SAFETY WARNINGS**

- 1. Careless and improper handling of this firearm could result in unintended discharge causing injury, death or property damage. Safety must be the first and constant consideration when handling a firearm and ammunition.**
- 2. This shotgun was designed to function properly in its original condition. Alterations can make it unsafe. Do not alter any part. Do not add or replace parts.**
- 3. Shotguns should only be carried with the action open and chamber empty to prevent accidental discharge.**
- 4. Always handle and treat your firearm as if it were loaded so you never fire it accidentally when you think it is unloaded. Always check it yourself with your fingers off the trigger and the firearm pointed in a safe direction.**
- 5. Never place your finger inside the trigger guard unless you intend to fire.**

- 6. Water, snow, mud, excessive lubricating oil, grease or any other material can obstruct the barrel of your firearm. Always check the barrel of your firearm for obstruction before loading and firing. Clean a fouled firearm immediately to ensure its correct and safe to function.**
- 7. Keep the firearm's muzzle pointed in a safe direct on at all times. Never let the muzzle of a firearm point at any part of your body, another person or at anything you do not intend to shoot. Always be certain of your target and what is behind it before firing.**
- 8. UNLOAD ALL FIREARMS WHEN NOT IN USE. NEVER STORE A LOADED FIREARM.**  
Firearms and ammunition should be safely stored separately so that they are inaccessible to children or unauthorized users.
- 9. Always make sure your firearm is not loaded before cleaning, storing, or handing it to another person.**
- 10. Always wear safety glasses while shooting to protect your eyes from injury by gun powder, gas, lubricant, dirt, metallic particles, carbon residue, sparks or other debris.**
- 11. Always wear ear protection when shooting, especially on a range. Without ear protection the noise from your firearm and other guns close to you, could leave a "ringing" in the ears for some time after firing. Repeated exposure to shooting noise could result in permanent hearing loss.**
- 12. Never climb a tree, fence or wall while carrying a loaded firearm.**
- 13. Don't shoot at a hard surface or water. A ricochet may travel in unpredictable directions to strike you or an object that you cannot see.**
- 14. Never drink alcoholic beverages or take drugs before or during shooting your firearm. As this constitutes criminal disregard for your safety and that of others. Never use a firearm while you are taking medication unless you have checked with your doctor to ensure your fitness to handle your firearm safety.**
- 15. If you have any doubts about your ability to handle or use this shotgun safely, seek supervised instruction..**
- 16. Remember, safety is your responsibility. Be a safe shooter.**
- 17. FOLLOW THE LAW: Obey all local, state and federal laws regarding storage, shooting and transporting your firearm.**

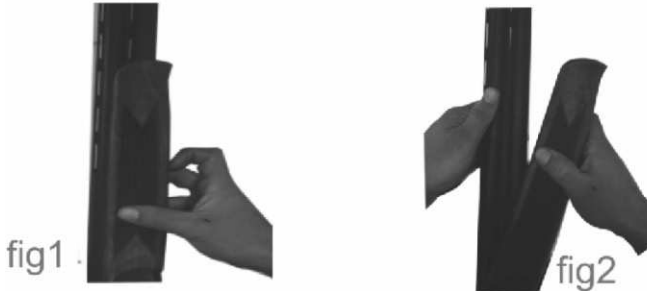
## DIRECTIONS FOR ASSEMBLY

**WARNING: READ AND UNDERSTAND ALL INSTRUCTIONS AND WARNINGS IN THIS MANUAL BEFORE USING THIS SHOTGUN.**

It is important to learn the parts of your shotgun and their functions before using this firearm.

Before assembling the shotgun, make sure there are no shot shells in the chambers.

1. Remove the forend from barrel by pushing the forend release button (Fig. 1) and pivot the forend away from the barrel (Fig.2)



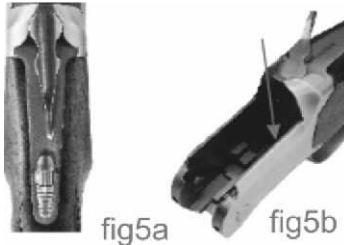
2. Apply a small amount of high quality lubricant to all surfaces on both sides marked with arrow in (Fig 3.)



3. Attach barrels to the action by pushing the top lever to the right and engaging the dual hinge pin surfaces at the forward portion of the receiver, with the hinge pin bearing notches on each side of the barrel. Hold the barrels with the muzzle at a downward angle with respect to the receiver. Once the bearings are properly seated, lift up on the barrels and close the action.(Fig. 4)



4. When the barrels are closed properly against the receiver, the Top Lever will return toward the center of the action. (Fig. 5a)



5. Attach the forend to the barrels by placing the metal part of the forend assembly against the receiver. Pivot forend toward the barrel to the closed and locked position against the barrels. (Fig. 6)



#### OPERATING INSTRUCTIONS

**WARNING : READ AND UNDERSTAND ALL INSTRUCTIONS AND WARNINGS IN THIS MANUAL BEFORE USING THIS SHOTGUN. IT IS IMPORTANT TO LEARN THE PARTS OF YOUR SHOTGUN AND THEIR FUNCTIONS BEFORE USING THIS FIREARM.**

#### TOP LEVER

The Top Lever controls the locking of the breech of the barrels to the receiver. To open the firearm, move the Top Lever to it's extreme right hand position and ease down the barrels. The Top Lever will remain in the "OPEN" position until the barrels are again closed and locked. The Top Lever will then automatically return toward the center position (Fig. 5a) With the barrel removed from the receiver the Top Lever can be returned to the center position by depressing the Top Lever Latch. (Fig. 5b) When the barrels are removed from the receiver, the Top Lever should always be returned to the center position to prevent damage and especially during transportation.

#### SAFETY/BARREL SELECTOR

Safety is first and foremost when handling any firearm. To engage the safety, slide the Safety Button fully rearward. There is a visible "S" to help guide you. To disengage the safety in order to fire the shotgun, slide the Safety Button fully forward. Always keep the safety in the "Safe" position until you are ready to fire the shotgun.

The Sporting and Trap models are equipped with only a manual safety which requires the Safety Button to be manually moved rearward to the “Safe” position to engage the safety from the fire position.

**WARNING:** Sporting and trap models ARE equipped with a manual safety only!

On WIMBERLEY Over & Under shotguns, the safety also performs the function of barrel selector. However, to perform this function the Safety Button must first be in the “Safe” position with the “S” visible. Once the safety is engaged, you can select which barrel will fire first by sliding the Selector Button to either the right or left. With the Selector Button moved to the right, the bottom barrel will fire first. When the Selector Button is moved to the left position the upper barrel will fire first

**WARNING: MAKE SURE YOU DO NOT DISENGAGE THE SAFETY WHILE YOU ARE SELECTING WHICH BARREL TO FIRE FIRST.**



#### SELECTIVE AUTOMATIC EJECTORS

WIMBERLEY Over & Under shotguns are equipped with automatic ejectors or extractors. If your shotgun is equipped with ejector system when you open the breech of the shotgun, they will automatically eject a fired case and partially extract any unfired shell for easy removal by hand. If your shotgun is equipped with extractor system, when you open the breech of the shotgun, fired or unfired shells will be able to easy removal by hand.(Fig 8)



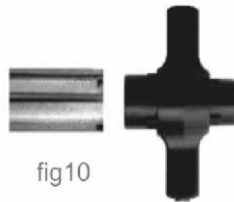
#### MULTI CHOKE TUBES

This WIMBERLEY Over & Under shotgun is equipped with interchangeable multi choke tubes. The notches on the top of the tube can identify the choke tube. (Fig. 9)



**WARNING : PERIODICALLY CHECK TO BE SURE THE CHOKE TUBES ARE TIGHT & PROPERLY SEATED.**

Before changing a choke tube, always make sure that your shotgun is unloaded and the safety is in the "Safe" position. To change the choke tubes, use the choke tube wrench. The wrench and additional chokes are supplied in the shotgun box. Insert the wrench into the recessed space of the tube and unscrew counterclockwise. Insert the desired choke tube and seat with the wrench in the clockwise direction. (Fig. 10)



**WARNING : NEVER FIRE YOUR SHOTGUN WITHOUT A CHOKE TUBE INSTALLED.**

This could damage the choke tube threads on the inside of the barrel. Use only high quality factory ammunition specifically designed for your gauge of shotgun. If the barrel is marked as a 3" chamber, it will accept both 3" and 2 3/4" shot shells. All WIMBERLEY shotguns will accommodate steel shot. However, steel shot should not be used with any choke tighter than a modified choke (flush mount or external. Do not use steel shot with improved modified, full or extra full choke tubes (flush mount or external.

**WARNING : ACCIDENTAL LOADING AND DISCHARGE OF SHELLS OF THE WRONG GAUGE IN YOUR FIREARM CAN RESULT IN DAMAGE TO YOUR FIREARM AND INJURY TO THE SHOOTER OR OTHERS.**  
Only carry the proper ammunition with you when shooting

**LOADING**

**WARNING : READ AND UNDERSTAND ALL INSTRUCTIONS AND WARNINGS IN THIS MANUAL BEFORE USING THIS SHOTGUN.**



It is important to learn the parts of your shotgun and their functions before using this firearm. Be sure of your target and what's beyond before firing.

To load your WIMBERLEY Over & Under shotgun, be sure the safety is in the "Safe" position, open the action by moving the top lever to the right. This will cause the lock to disengage and allow the barrels to pivot downward exposing the chambers. Insert shotshells of the appropriate gauge and size into the chambers. (Fig. 11) When you are finished loading the chambers, close the breech by pivoting the barrels against the action. The top lever will return toward close to the center position when the breech is closed and locked.



### **FIRING**

After you have inserted the shot shells into the chambers and have closed and locked the breech, your shotgun is ready to fire. Disengage the safety by pushing the safety button fully forward. Pull the trigger and the selected barrel will fire. After firing, allow the trigger to return to the fully forward position before firing again. Always keep the shotgun pointed in a safe direction and the safety in the "safe" position.

**WARNING: READ AND COMPLETELY UNDERSTAND ALL INSTRUCTIONS AND WARNINGS IN THIS MANUAL BEFORE USING THIS SHOTGUN.**

### **UNLOADING**

Before unloading, check to assure that the safety is in the "Safe" position. Open the action by pushing the top lever all the way to the right and pulling the barrels fully downward. WIMBERLEY Over & Under shotguns are equipped with automatic ejectors or extractors. If your shotgun is equipped with ejector system when you open the breech of the shotgun, they will automatically eject a fired case and partially extract any unfired shell for easy removal by hand. Be careful of this ejecting action. If your shotgun is equipped with extractor system, when you open the breech of the shotgun, fired or unfired shells will be able to easy removal by hand.

## **DISASSEMBLY**

**WARNING: READ AND FULLY UNDERSTAND ALL INSTRUCTIONS AND WARNINGS IN THIS MANUAL BEFORE USING THIS SHOTGUN.**

Disassemble, clean and oil your shotgun at regular intervals or when it has been exposed to sand, water or other adverse conditions.  
TO disassemble your shotgun:

- 1- Remove the forend by pushing the forend release button and pivoting the forend away from the barrel.
- 2- Push the top lever to the right to disengage the action.
- 3- Remove the barrel assembly.
- 4- Further disassembly is not recommended and not necessary for regular maintenance. (Fig.12)



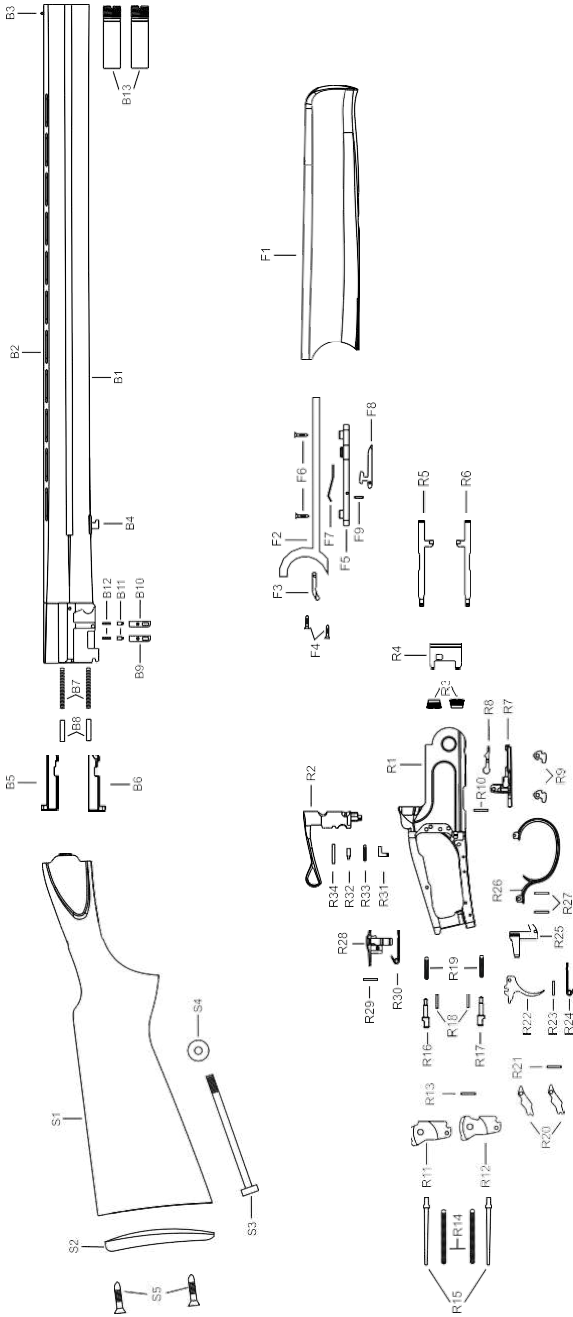
fig12

## **CAUTION**

Always unload your firearm and store it and ammunition separately in locked receptacles out of children's reach and sight, minimizing the risk that the firearm and ammunition could be easily available for loading and firing.

**USE YOUR SHOTGUN CAREFULLY AND SAFETY.**



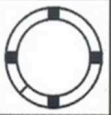
# Wimberley Over Under Shotgun Part Diagram



<b>STOCK GROUP</b>		<b>BARREL GROUP</b>	
<b>S1</b>	STOCK	<b>B1</b>	BARREL ASSEMBLY
<b>S2</b>	RECOIL PAD	<b>B2</b>	TOP RIB
<b>S3</b>	STOCK BOLT	<b>B3</b>	FRONT SIGHT
<b>S4</b>	STOCK BOLT WASHER	<b>B4</b>	FOREND TAKE
<b>S5</b>	RECOIL PAD SCREW X 2	<b>B5</b>	EJECTOR LEFT
<b>RECEIVER GROUP</b>		<b>B6</b>	EJECTOR RIGHT
<b>R1</b>	RECEIVER	<b>B7</b>	EJECTOR SPRING X 2
<b>R2</b>	TOP LEVER	<b>B8</b>	EJECTOR CATCH PLATE
<b>R3</b>	PIN, HINGE X 2	<b>B9</b>	EJECTOR CATCH PLATE LEFT
<b>R4</b>	LOCKING PLATE	<b>B10</b>	EJECTOR CATCH PLATE RIGHT
<b>R5</b>	HAMMER COCKING ROD LEFT	<b>B11</b>	EJECTOR SPRING GUIDE SCREW X 2
<b>R6</b>	HAMMER COCKING ROD RIGHT	<b>B12</b>	EJECTOR CATCH PLATE SPRING X 2
<b>R7</b>	BOTTOM PLATE	<b>B13</b>	CHOKE TUBES
<b>R8</b>	LOCKING PLATE RETAINER	<b>FOREND GROUP</b>	
<b>R9</b>	HAMMER COCKING CAM	<b>F1</b>	FOREND
<b>R10</b>	HAMMER COCKING CAM PIN	<b>F2</b>	FOREND IRON
<b>R11</b>	HAMMER LEFT	<b>F3</b>	COCKING PIECE
<b>R12</b>	HAMMER RIGHT	<b>F4</b>	FOREND SCREW X 2
<b>R13</b>	HAMMER PIN	<b>F5</b>	TAKEDOWN LEVER BRACKET
<b>R14</b>	HAMMER SPRING X 2	<b>F6</b>	FOREND SNAP LEVER
<b>R15</b>	HAMMER SPRING GUIDE ROD		GUIDE SCREW X 2
<b>R16</b>	FFIRING PIN OVER	<b>F7</b>	FOREND SNAP LEVER SPRING
<b>R17</b>	FIRING PIN UNDER	<b>F8</b>	FOREND SNAP LEVER
<b>R18</b>	FIRING PIN X 2	<b>F9</b>	TAKEDOWN LEVER PIN X 2
<b>R19</b>	FIRING SPRING X 2		
<b>R20</b>	SEAR X 2		
<b>R21</b>	SEAR PIN		
<b>R22</b>	TRIGGER		
<b>R23</b>	TRIGGER PIN		
<b>R24</b>	TRIGGER SPRING		
<b>R25</b>	TRIGGER SEAR CATCH		
<b>R26</b>	TRIGGER GUARD		
<b>R27</b>	TRIGGER GUARD PIN X 2		
<b>R28</b>	SAFETY		
<b>R29</b>	SAFETY PIN		
<b>R30</b>	SAFETY SPRING		
<b>R31</b>	AUTOMATIC SAFETY STOPPER		
<b>R32</b>	AUTOMATIC SAFETY ROD		
<b>R33</b>	TOP LEVER SPRING		
<b>R34</b>	TOP LEVER PIN		

## USAGE OF CHOKE TUBES

The choke is what controls the openness or tightness of the pattern of your shotgun. The chart below lists the choke available (from open to tight), and the correct sponding marks that indicate the choke of your specific shotgun.

	SKEET	M	F
CHOKE TUBE			
BBLs	CL	***	*

Never fire or run gun cleaning tools through a barrel that uses choke tubes without having a choke tube installed. The threads of the choke tube and the internal threads of the barrel should be cleaned after each use and before installation of the tube. To install a tube, insert the tube into the barrel and tighten with your fingers. Once the tube is finger tightened, tighten with the appropriate choke-tube wrench until the tube is snug. **DO NOT** over tighten or forcefully tighten with wrench.

## MAINTENANCE AND CLEANING

**Caution:** Make sure the gun is unloaded.

1. Make sure that the broad, polished, finely fitted mating surfaces of the breech block and receiver are especially clean and lightly oiled with a high quality gun oil. Do not use pure silicone or lanolin.

2. Run an oil patch through the bore with a cleaning rod starting from the breech end . To prevent leading, use a cleaning solvent and brass brush to clean the bore periodically. Follow this cleaning with one or two clean oil patches.

**Important:** If your gun is equipped with choke tubes, do not use a brass brush to clean the barrels unless a choke tube is installed in each barrel. Barrels that utilize choke tubes must also have the choke tubes removed to clean and oil the threads inside the barrel and the choke tubes themselves. This will protect the threads from being damaged by cleaning tools and also prevent a dirt build up that would cause the choke tube to become difficult to remove from the barrel. Damage can result to choke tubes and barrel when attempting to remove sticky choke tubes. Never fire your gun without choke tubes snugly tightened in barrels. Do not over tighten choke tubes. Wipe all exposed metal surfaces with an oiled cloth before storing . Do not

squirt or pour oil into the inside mechanism because it may hamper proper functioning and will soak the wood. After extended periods of heavy use, your gun should be taken to a qualified gunsmith to have the action disassembled for professional cleaning and lubrication.

3. Care for your wood stock and forearm the same way you would a piece of furniture with the same finish.

## **STORAGE**

Clean thoroughly and oil your gun before storage. Store the gun in a case to prevent scratches and dents. Store in a dry place to prevent corrosion. Store the gun away from children and in place where it cannot be obtained by those unauthorized to use it. Always store gun unloaded and separately from any ammunition.

## **IMPORTANT USAGE OF STEEL SHOT**

The choke (bore constriction) in all modern shotguns has been established based on the pattern performance of shot shells loaded with lead shot. When using the steel shot shells, you will notice a different performance in pattern density versus the established lead shot pattern, because the steel shot is harder and lighter than lead shot.

You should be aware of the following differences and cautions: Never shoot steel shot loads in a full choked barrel or full choke tubed barrel. TO do so may cause the barrel to swell or rupture. In general, steel shot fired with a modified choke will produce the equivalent of a lead full choke pattern. This will be true of all steel shot sizes up to and including no. 2. The established improved cylinder chokes will produce the equivalent of a (lead) modified choke pattern.

All steel shot sized larger than no. 2, and including special sized such as -F, etc., should be used only with improved cylinder chokes. These steel shot sized, when used in impm,ed cylinder chokes, will produce patterns equivalent to (lead) full choke patterns. The established cylinder choke or bore will produce the equivalent of a modified (lead) pattern.

## **SERVICE AGREEMENT AND LIMITED WARRANTY**

Wimberley agrees to service its products free of charge for defects in materials and workmanship in accordance with the service agreement listed below. The obligation of Wimberley under this agreement is limited to the repair or replacement of un serviceable parts and does not cover any incidental or consequential damages. Other than the express warranty contained herein makes no warranties, express or implied Wimberley will repair or replace any un serviceable part(s) for one [1] year from date of purchase and further will supply free parts (Wood not included) for an additional two [2] years in accordance with the above warranty statement provided your firearm had not been altered, abused, willfully damaged, or damaged by overpressure ammunition. This agreement is not transferable; its benefits apply only to the original purchaser.

To obtain free service during the time this agreement is in effect, make sure your firearm is unloaded, and send it to Wimberley.

This agreement and the warranties contained herein are void if your registration card is not received with a copy of your sales slip within 30 days from date of purchase

Additional information concerning the use of steel shot is available from Remington, Winchester, Federal and other ammunition companies.

## **PARTS**

To order parts, please furnish the following information: Your name, address, telephone number, firearm serial number, make and model. When we receive your request we will send you an order form and a parts breakdown with prices.

## **SHIPPING**

When returning your gun for service, please take care in packing. Disassemble your gun, wrap in paper or other protective media and place gun in the original box. [THIS BOX WILL PROTECT THE GUN BUT IS NOT DESIGNED FOR SHIPPING]. Wrap box in a cardboard box approved for interstate shipping. Wimberley is not responsible for damage incurred during shipping.

## **SHIPPING CONT.**

Some Federal, State and local hunting regulation may require that a shotgun be limited to a maximum shell capacity of five [5] rounds. Your shotgun has been packed with a magazine plug for this purpose. maximum shell capacity of five [5] rounds. Your shotgun has been packed with a magazine plug for this purpose.

## Installation

1. Remove the forend screw cap, the forend and the barrel.
2. At the threaded end of the magazine tube (where the forend screw cap fits) you will locate a black snap ring.
3. A large blade screw driver should be used to remove the snap ring. **CAUTION:** The snap ring will be under pressure from the magazine spring. Do not remove the snap ring in a manner where the ring could fly out and strike you or anyone else causing injury, particularly to the eye.
4. Compress the magazine spring into the magazine tube, and insert the magazine plug (small end first). Push the magazine plug and insert the snap ring so the snap ring end is flush with the end of the tube.

## THANK YOU

Thank you for purchasing Wimberley shotgun. We are sure this gun will bring you years of hunting and/or shooting pleasure. Your satisfaction is the key to our success. Please let us know if we can be of service and please relay any observations about our guns performance or appearance.

## PURCHASERS RECORD

Model Number : \_\_\_\_\_

Purchase Date : \_\_\_\_\_

Gauge or Caliber : \_\_\_\_\_

Serial Number : \_\_\_\_\_

Purchase Price : \_\_\_\_\_

Store Name : \_\_\_\_\_

Custom service or nonstandard alterations are NOT AVAILABLE from Wimberley factory.

**WARNING:** Before shipping any firearm, be absolutely certain that it is Unloaded. DO not ship cartridges with a firearms.



## **WARRANTY AND CONDITIONS**

**Any legitimate purchaser of a Wimberley gun is entitled, under the following conditions, to have it repaired free of charge (parts and labor) in the event of defects occurring that can be shown to be due to defective materials or Manufacturer.**

**This warranty is valid for one (1) year from the date of delivery of the product to its initial purchaser.**

**Under the terms of this warranty no other intervention will be accepted by Wimberley or its distributors and in particular no indemnity will have paid for loss of use.**

**This warranty excludes any breakage of the wooden elements where such breakage is not due to an intrinsic defect of the wood.**

**This warranty shall only apply if, within the aforementioned period of two (2) the purchaser of the gun hands back or returns the allegedly defective gun to an official Wimberley distributor at his/her own cost and risks within fifteen [15] days of said defect or defects and any other documents or cover establishing the place and date of the initial purchase [for example a copy of invoice].**

### **This warranty will not apply where:**

**1. It is apparent that the alleged defect can reasonably be attributed to normal wear and tear of the gun, intentional damage, negligent maintenance, storage or use or to improper use (such as unsuitable or reloaded ammunition)**

**2. The gun has been converted or altered in any way.**

**Under the terms of this warranty, all repairs or replacements shall be affected within a reasonable time scale. All repairs, with or without replacement of parts, must be performed using top correct equipment by an Official Wimberley distributor or Wimberley approved service center.**

**The customer will be advised when the repaired or replacement gun is ready. It will either be held for collection or, if the customer so requests, can be delivered to his home address at his own risk and cost.**

**Any servicing or repair work carried out under the terms of this warranty shall not extend the warranty period or either the conditions thereof. However, the repair itself will be guaranteed for a period of one (1) year from the date the repaired gun becomes available.**

**In the event that the gun is replaced with a new one, the full warranty shall begin, to apply from the moment the replacement gun is handed to the customer.**







[www.wimberleyarms.com](http://www.wimberleyarms.com)